

# FOR LEASE

CLASS A OFFICE SPACE

**ROBINSON**  
COMMERCIAL REAL ESTATE

9800 - 9850 DORAL BOULEVARD, DORAL, FLORIDA 33178

# FOR LEASE

17-ACRE | CLASS A OFFICE PARK

**Doral Costa**  
OFFICE PARK

9800 - 9850 DORAL BOULEVARD, DORAL, FLORIDA 33178



For more information, please contact:

**Walter K. Robinson | Principal**

Robinson Commercial Real Estate  
786-351-2918  
walter.robinson@robinsoncre.com



## THE LOCATION

Doral Costa Office Park offers 280,000 square feet of Class A office space in a 17-Acre manicured tropical setting in the heart of the City of Doral and centrally located between the Palmetto Expressway and Florida's Turnpike. It is only minutes to Miami International Airport, Downtown Miami and the Port of Miami. This location provides tenants the ability to source talent from anywhere in the South Florida Region.

## THE STABILITY

The Landlord team has been consistently delivering a high level of service to the tenants since the acquisition of the land and development of the first office buildings over 14 years ago. That same team is directly involved today. The asset management team is one of the largest and most experienced privately held real estate advisors in the United States and operates the park debt free. Robinson Commercial Real Estate principal anchored the first lease and continues to maintain tenant relationships that exceed their expectations.

## THE DORAL COSTA DIFFERENCE

The strategic location, abundant amenities, long-term institutional ownership, and quality on-site property management have consistently solidified tenant renewals at Doral Costa Office Park.



**ROBINSON**  
COMMERCIAL REAL ESTATE



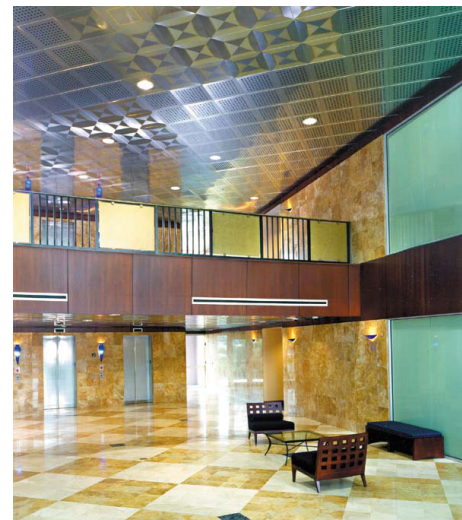
# FOR LEASE

## CLASS A OFFICE SPACE

Doral Costa  
OFFICE PARK

9800 - 9850 DORAL BOULEVARD, DORAL, FLORIDA 33178

### SAMPLE TENANTS



### THE AMENITIES

Doral Costa Office Park is the only Class A office space in the Doral / Airport markets that is within walking distance of multiple dining options, fitness center, day care, banking, salons, medical care, language center and other professional services. It is also next to the Doral Resort and Spa that is owned by Trump Hotel Collection who is investing \$200 Million to maintain the iconic resort as the world's finest golf resort. In addition banking, cafe and carwash are located inside Doral Costa Office Park.



For more information, please contact:

Walter K. Robinson | Principal

Robinson Commercial Real Estate  
786-351-2918  
walter.robinson@robinsoncre.com

ROBINSON  
COMMERCIAL REAL ESTATE

Licensed Real Estate Broker

The information provided herein was obtained from sources believed reliable; however, Robinson Commercial Real Estate makes no guarantees, warranties, or representations as to the completeness or accuracy thereof. The presentation of this property is submitted subject to errors, omissions, change of price or conditions, prior sale or lease, or withdrawal without notice.

Copyright © 2013 Robinson Commercial Real Estate